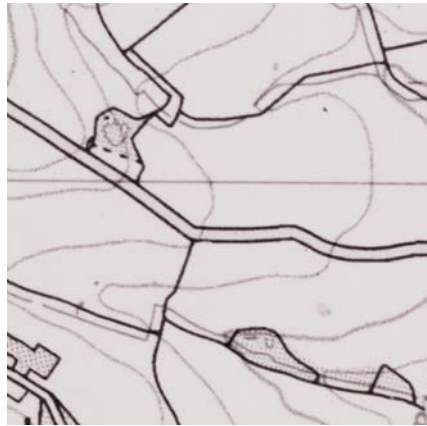


# Cycle

Figures showing the velocity of gliding and the momentum of landscape / Lines



Descending along a country road using neither pedals nor brakes, provides a distinctive view of the changing landscape. A sequence of differing speeds and aspects are experienced by the rider as the road varies in both direction and gradient. The speed is determined by the gradient of each particular section of the road that is being passed over, as well as the gradient of the preceding parts.

A stretch of slow road, followed by a slightly faster stretch, will result in a further distance of slow road being covered slightly *faster* than the first. A stretch of slow road followed by a slightly slower stretch, will result in another distance of slow road being covered slightly *slower* than the first.

The landscape adjacent and beyond the road—the immediate topography that the road passes and is part of—determines the speed of passage and the perception of that landscape. In addition, the landscapes that precede alter the experience of the landscapes that follow. To simply free-wheel is a demonstration of geographical momentum—the passive experience of the particular duration of here to there.



8pp, 105 x 150, offset on buff manilla, pamphlet; Axminster, 2002.