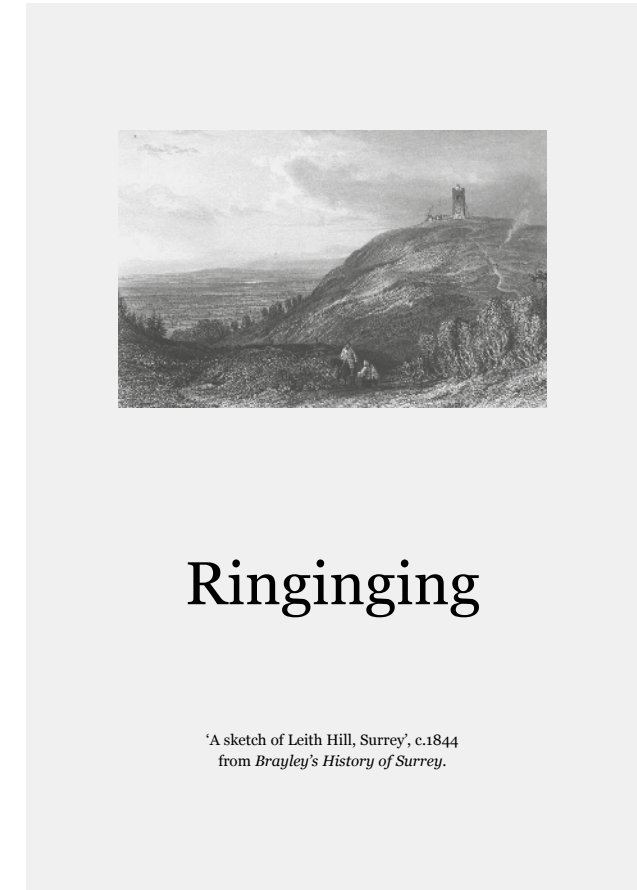


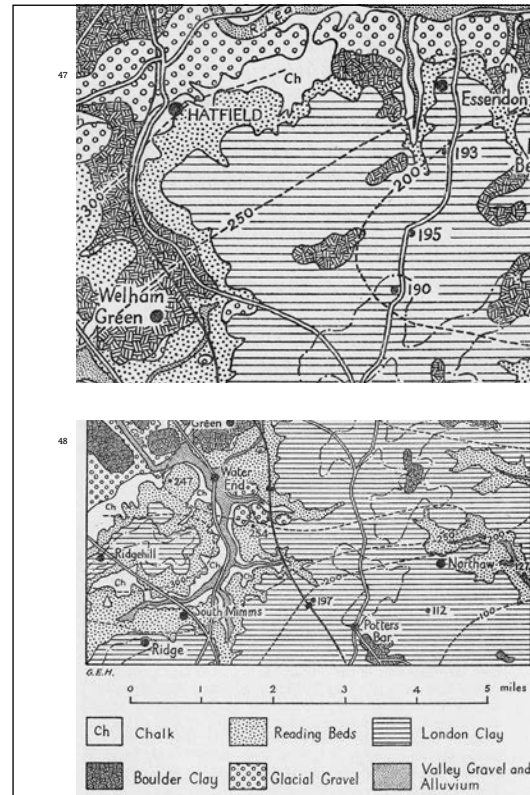
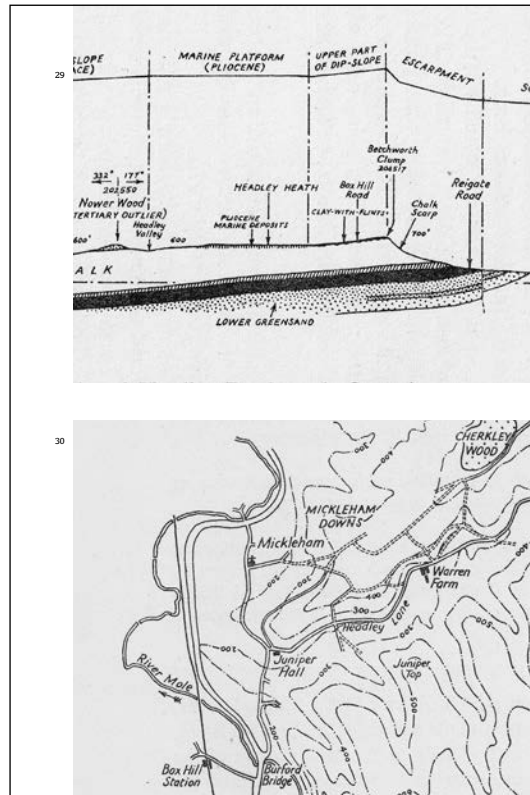
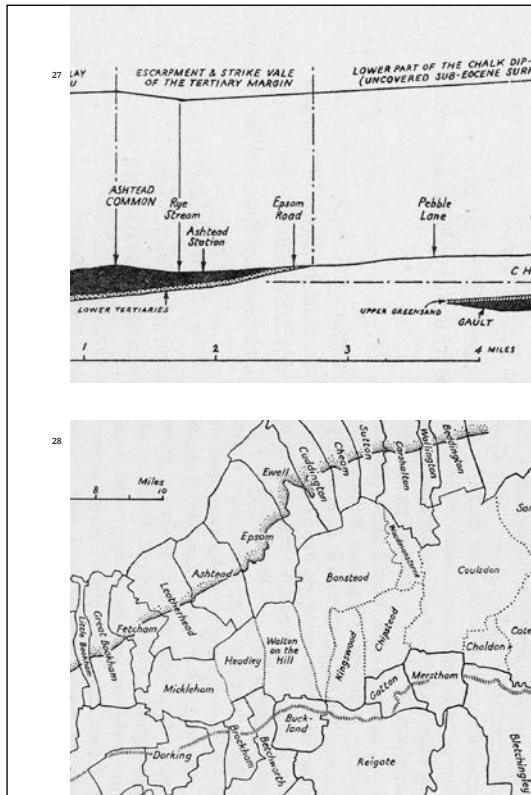
Ringinging



Ringinging

'A sketch of Leith Hill, Surrey', c.1844 from Brayley's History of Surrey.

The telephone number of the tower at the top of Leith Hill in Surrey is 01306 712434; the viewing platform of which is, at 1000-feet, the highest point in south-eastern England. / A limited number of this leaflet has been published in Autumn 2007



Included, along with a numeric height sequence, in *Englishpublishing* (2004); in *Printed landscape* (2019). Working screenshots are shown in *The Simple Reader* (see p.151).

8pp, 190 x 130, inkjet on white cartridge, pamphlet; Axminster, 2007.