



PLATE 13

A sunken lane in East Devon: Armourwood Lane, near Thorverton. It originated as a boundary (probably in the seventh century) between the royal estate of Silverton (left) and the Exeter Abbey estate (right). A double ditch was dug out by slave-labour, and the earth thrown up to form hedgebanks on each side. The "two-fold ditch" thus becomes a sunken lane running as far as the Saxon boundary required.

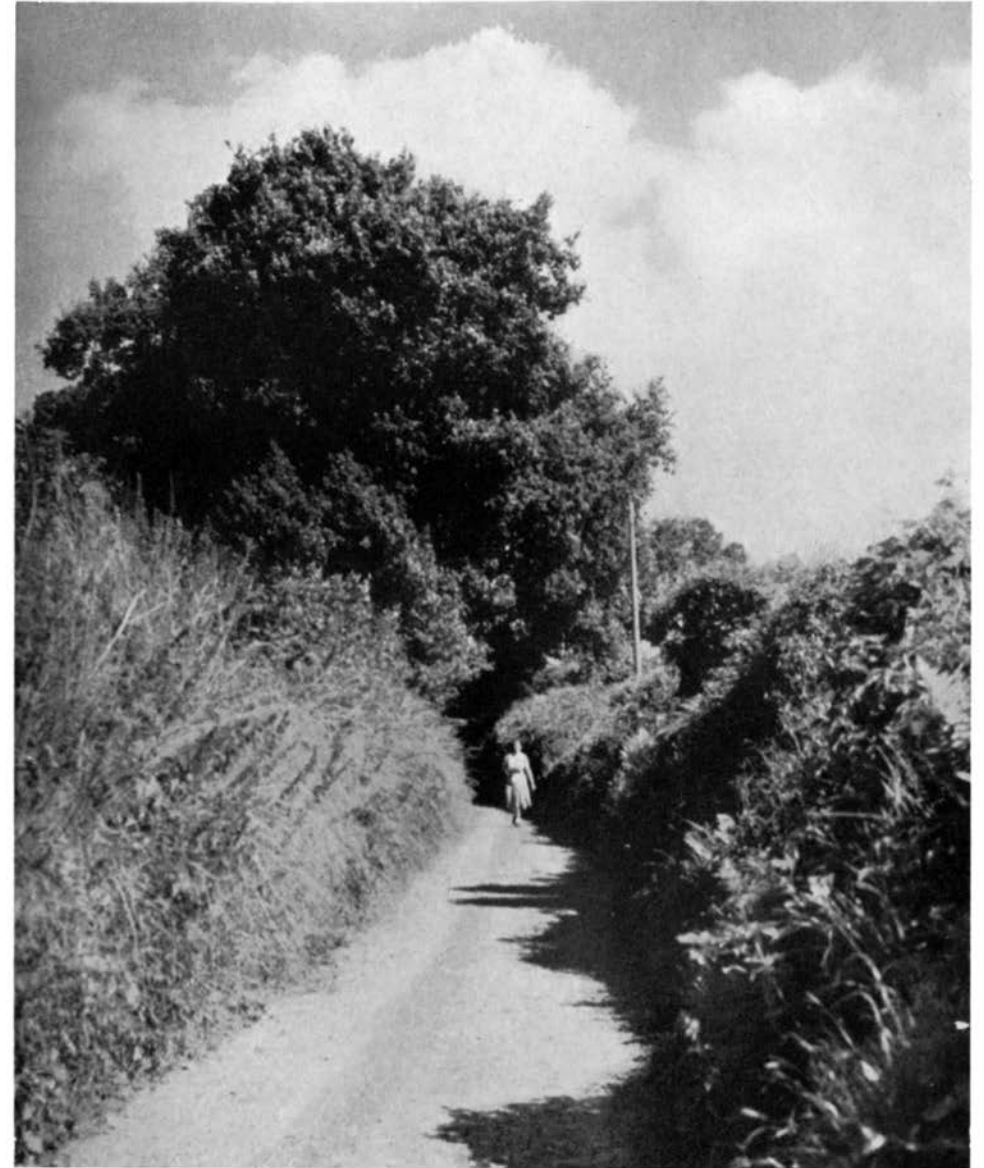


PLATE 13

A sunken lane in East Devon: Armourwood Lane, near Thorverton. It originated as a boundary (probably in the seventh century) between the royal estate of Silverton (left) and the Exeter Abbey estate (right). A double ditch was dug out by slave-labour, and the earth thrown up to form hedgebanks on each side. The "two-fold ditch" thus becomes a sunken lane running as far as the Saxon boundary required.

Les Coleman's booklet *Glue* (In House Publishing, London & Oxford, 2002) is a sequence of blank pages each affixed to the next with a different adhesive. The list of Contents reads: Coccoina, Copydex, Gloy, Multi-Purpose Water Glue, Ocacell Cellulose Adhesive, Pickup, Platignum Studio Gum, Pritt, PVA, Spray Mount, Stephens Golden Gum, and UHU.

p.56, *The Making of the English Landscape*, W. G. Hoskins; London, 1955. / p.78-79, *Printed landscape* (2019).