

## Reverb

A hard-plastered wall is a better reflector of sound than most mirrors are of light; sound waves may travel for miles in large and empty rooms before dying away.

A room for acoustic research is thickly lined with cotton wool on the floor, walls and ceiling, and is so absorbent that speech and music become unnatural.

### Antiphone

Ardente public address system

### Boeing

Concrete breaker

Ear defenders, protectors and stops

Ear plugs and percussion resistors

Floating floor

Linatex age-resisting rubber

Pip

Silenta typewriters

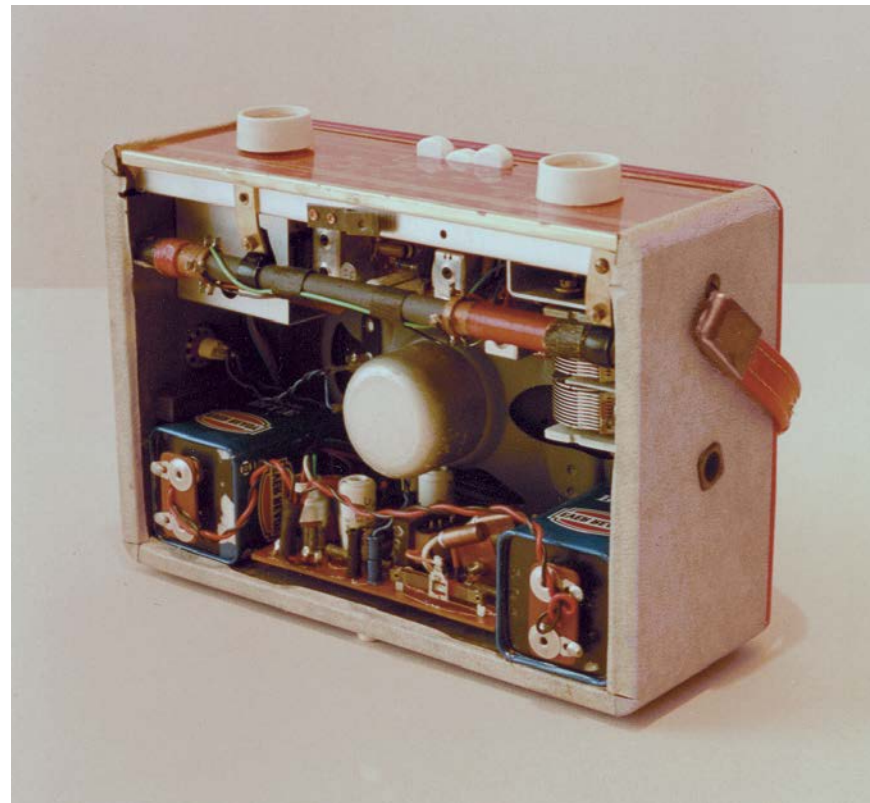
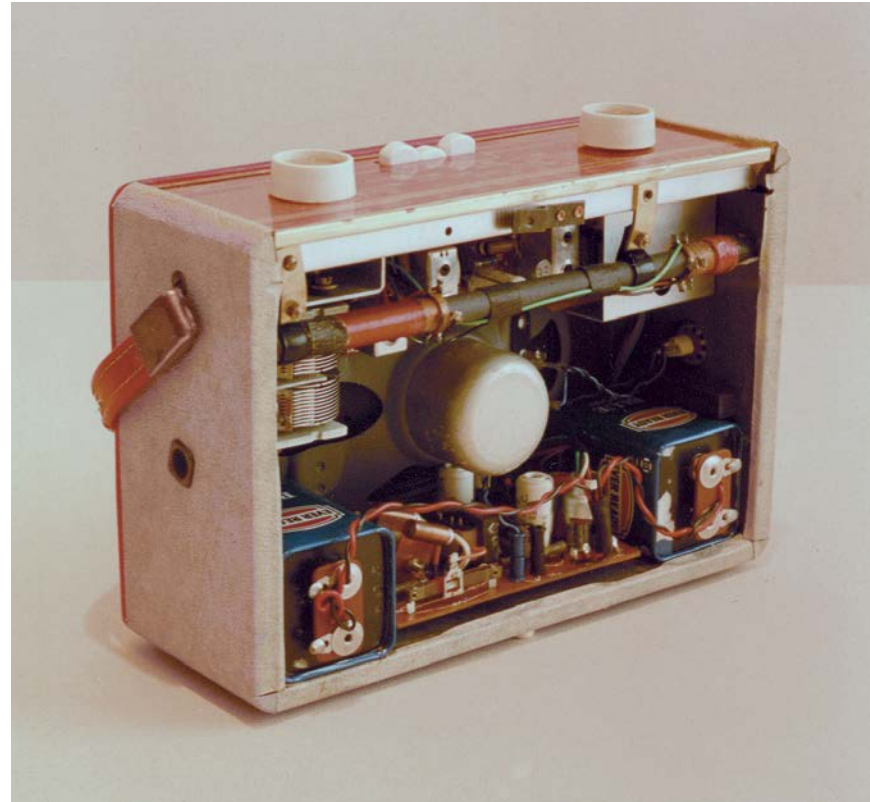
Soundex flesh-coloured vulcanite

Spandit silent rubber toys

Top

Toyot

Originally in *Wirelessness* (1992); and *Englishpublishing* (2004).



## Reverb

A hard-plastered wall is a better reflector of sound than most mirrors are of light; sound waves may travel for miles in large and empty rooms before dying away.

A room for acoustic research is thickly lined with cotton wool on the floor, walls and ceiling, and is so absorbent that speech and music become unnatural.

### Antiphone

Ardente public address system

### Boeing

Concrete breaker

Ear defenders, protectors and stops

Ear plugs and percussion resistors

Floating floor

Linatex age-resisting rubber

Pip

Silenta typewriters

Soundex flesh-coloured vulcanite

Spandit silent rubber toys

Top

Toyot